

4x2 HDMI 2.0 Matrix Switcher

User Manual

VER 1.0

Thank you for purchasing this product

For optimum performance and safety, please read these instructions carefully before connecting, operating or adjusting this product. Please keep this manual for future reference.

Surge protection device recommended

This product contains sensitive electrical components that may be damaged by electrical spikes, surges, electric shock, lightning strikes, etc. Use of surge protection systems is highly recommended in order to protect and extend the life of your equipment.

Table of Contents

1. Introduction.....	2
2. Features.....	2
3. Package Contents.....	2
4. Specifications.....	3
5. Operation Controls and Functions.....	4
5.1. Front Panel.....	4
5.2. Rear Panel.....	4
6. Remote Controller.....	6
7. Application Example.....	7

1. Introduction

The 4x2 HDMI 2.0 Matrix Switcher simultaneously routes four HDMI sources to two HDMI displays. It supports up to 4K2K@60Hz YCbCr 4:4:4 and HDCP 2.2. Output A supports audio de-embedding to optical and analog L/R outputs. Output B can support 4K to 1080P downscale function automatically if source is 4K but TV only supports up to 1080P. 16 different EDID configurations can meet most of use cases. Flexible control through on-panel buttons, IR control.

2. Features

- ☆ HDMI2.0b, HDCP2.2/HDCP1.4 compliant.
- ☆ Up to 4K2K@60Hz (4:4:4) on all HDMI ports.
- ☆ Supports pass-through audio up to 7.1 channels of High Definition audio (LPCM, Dolby TrueHD, and DTS-HD Master Audio).
- ☆ Out A audio de-embedding to optical and analog L/R out.
- ☆ Out B supports 4K to 1080P downscale automatically.
- ☆ HDR, ARC, Smart EDID management.
- ☆ Control is via on-panel Button and IR.

3. Package Contents

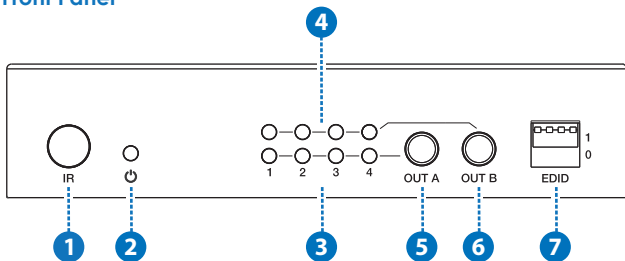
- ① 1× 4×2 HDMI Matrix Switch
- ② 1× 5V/1A Power Adaptor
- ③ 1× User Manual
- ④ 1× HDMI Matrix IR Remote
- ⑤ 2× Mounting ears

4. Specifications

Technical	
HDMI Compliance	HDMI 2.0b
HDCP Compliance	HDCP 2.2 and HDCP 1.4
Video Bandwidth	4K2K@50/60Hz(YUV4:4:4),4K2K@30Hz.All HDMI 3D TV format
Color Space	RGB, YCbCr4:4:4,YCbCr4:2:2
Color Depth	8-bit, 10-bit, 12-bit
HDMI Audio Formats	PCM2.0/5.1/7.1CH, Dolby 5.1, DTS5.1, Dolby-TrueHD, DTS-HD
Optical AudioFormats	LPCM 2CH, LPCM 5.1, Dolby Digital 2/5.1CH, DTS 2/5.1CH
L/R Audio Formats	Analog stereo 2CH
ESD Protection	Human-body Model: $\pm 8\text{kV}$ (Air-gap discharge) , $\pm 4\text{kV}$ (Contact discharge)
Connections	
Inputs	4×HDMI Type A(19-pin female) 1×IR Receiver Window
Outputs	2×HDMI Type A(19-pin female) 1×L/R Audio out (3.5mm Stereo Mini-jack) 1×Optical out (S/PDIF)
Mechanical	
Housing	Metal Enclosure
Color	Black
Dimensions	12.5mm(W)×9.5mm(D)×2.5mm(H)
Weight	363g
Power Supply	Input: AC100~240V 50/60Hz Output: DC5V/1A(US/EU standards , CE/FCC/UL certified)
Power Consumption	3.2 W (max)
Operating Temperature	0°C ~ 40°C / 32°F ~ 104°F
Storage Temperature	-20°C ~ 60°C / -4°F ~ 140°F
Relative Humidity	20~90% RH (non-condensing)

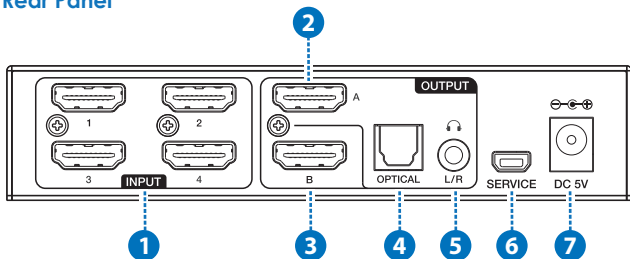
5. Operation Controls and Functions

5.1 Front Panel



Number	Name	Function description
1	IR	IR receiver window
2	POWER LED	Power LED indicator
3	OUT A LED	Select the input channel indicator light for the output A
4	OUT B LED	Select the input channel indicator light for the output B
5	OUT A button	Select the input channel button for the output A
6	OUT B button	Select the input channel button for the output B
7	EDID	Select HDMI output signal format via EDID Selector

5.2 Rear Panel

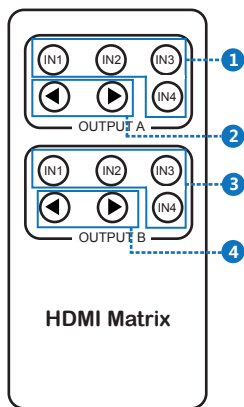


Number	Name	Function description
1	INPUT PORTS	Connect to HDMI sources device such as DVD player
2	OUTPUT A	Connect to HDMI display device such as TV or monitor
3	OUTPUT B	Connect to HDMI display device such as TV or monitor
4	OPTICAL OUTPUT	Extracts HDMI Output A audio to optical out
5	L/R OUTPUT	Extracts HDMI Output A audio to L/R analog audio out
6	SERVICE	System software update
7	DC 5V	DC 5V power supply interface

Notice: The following is the EDID schema table

Number	EDID mode	EDID description
1	0000	720p, 2CH AUDIO
2	0001	1080p, 2CH AUDIO
3	0010	1080p, DOLBY/DTS 5.1
4	0011	1080p, HD AUDIO 7.1
5	0100	3D, 2CH AUDIO
6	0101	3D, DOLBY/DTS 5.1
7	0110	3D, HD AUDIO 7.1
8	0111	4K30, 2CH AUDIO
9	1000	4K30, DOLBY/DTS 5.1
10	1001	4K30, HD AUDIO 7.1
11	1010	4K60(4:2:0), 2CH AUDIO
12	1011	4K60(4:2:0), DOLBY/DTS 5.1
13	1100	4K60(4:2:0), HD AUDIO 7.1
14	1101	4K60, 2CH AUDIO
15	1110	4K60, DOLBY/DTS 5.1
16	1111	4K60, HD AUDIO 7.1

6. Remote Controller



- ① Select the input channel for the output A.
- ② Select the last or next input channel for the output A.
- ③ Select the input channel for the output B.
- ④ Select the last or next input channel for the output B.

7. Application Example

