



HD Video Adjuster

Model: LM-AD01

User Manual

Catalog

1 st . Installation Instructions	2
2 nd . Projector ready to work	3
3 rd . Communications settings	5
4 th . Device debugging	7
5 th . Image trimming	8
6 th . Save and load patterns	8
7 th . Other considerations	8

1st Installation Instructions

For your safety and equipment, please be sure to read the safety instructions carefully before using this equipment.

If you are in doubt, please read the manual. It has a detailed description of the device operation. If you still have any questions, please contact us and we will give you a satisfactory reply as soon as possible.

There is no extra-notice if the specification is changed.

Equipment installation, please note the following:

1.1. Power supply:

This device uses 12V/3A power adapter, power adapter support 100–240V AC voltage input, in order to make the device can work normally, please do not use other power adapter.

1.2. Power off:

When you need to move the equipment or other work that needs to be cut off power, turn off all the power and unplug the power plug to ensure the safety of the equipment.

1.3. Cable:

Can not be in power lines, signal lines, communication lines and other cables on the items, should avoid the cable was trampled or squeezed to prevent leakage or short circuit and other dangerous.

1.4. Signal line connection:

When the device is inserted and pulled out, the equipment needs to be power off to avoid damage to the equipment. Damage caused by live plug is not within the scope of warranty.

1.5. Cooling hole:

The outer surface of the equipment may have a hole for heat dissipation, do not plug the openings, so as not to heat accumulation, damage to equipment or cause fire hazards.

1.6. Equipment placement:

Reasonable placement of equipment, such as the standard frame, chassis, cabinets, or placed in a stable and smooth work table, to prevent the equipment fall.

1.7. The environment:

Equipment working environment should pay attention to dust, moisture, especially to prevent liquid immersion and splashing into the equipment.

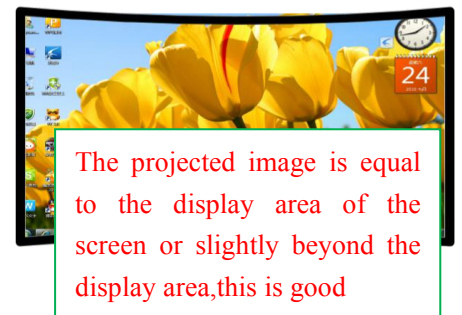
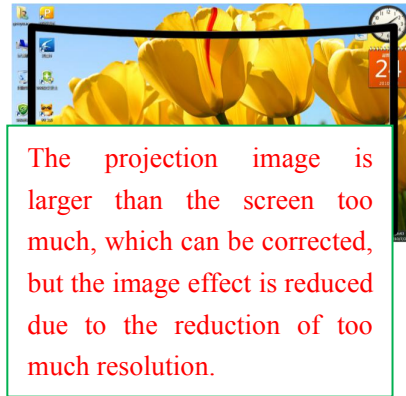
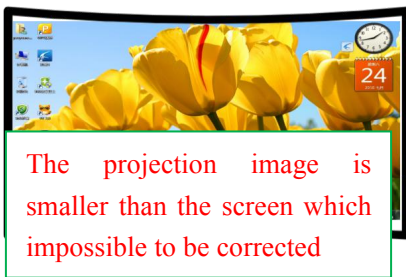
1.8. Maintenance:

All maintenance work should be done by professional maintenance personnel. In order to prevent the risk of electric shock, do not open the cabinet.

2nd Projector ready to work

1. Overview:

The most important function of the LM-AD01 device is to make the image to be projected onto the screen, and keep the image free from overflow and deformation. In accordance with the requirements of the projector in advance to do the physical location of the maximum extent to enable the display of the image to do the most clear. No corrector, we recommend that users of the projector image is slightly greater than or equal to the projection screen the effective display area, but not too large. Adjust the physical location of the projector following several models for customer reference and description:



2. Panel Descriptions:



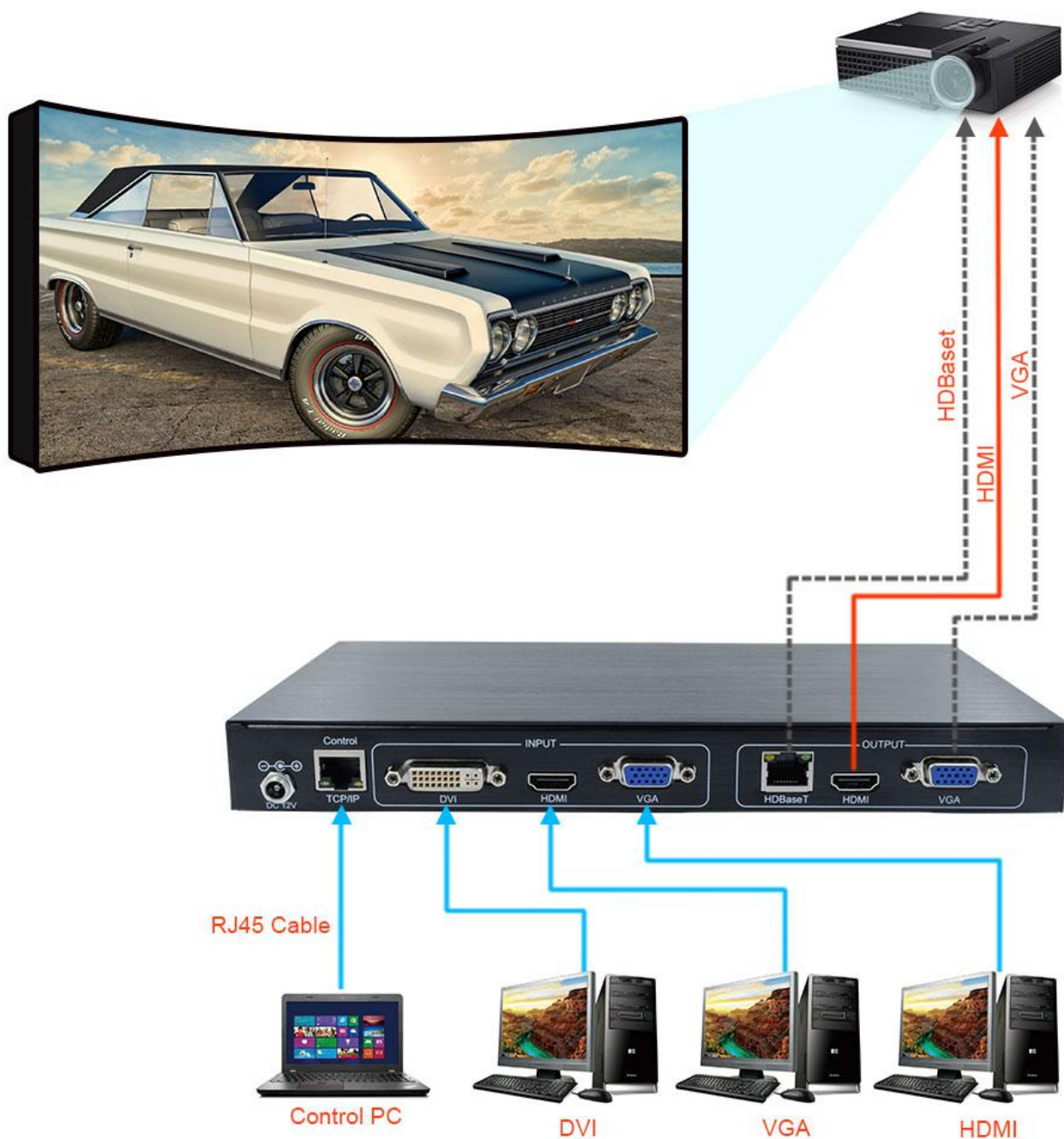
- 1
- 2
- 3

- 1 Reset button
- 2 Green light:status of Signals connections
- Red light:status of Power input
- 3 Power ON/OFF
- 4 DC/12V Power supply
- 5 Control TCP/IP port
- 6 DVI Input port
- 7 HDMI Input port
- 8 VGA Input port
- 9 HDBaseT Output port
- 10 HDMI Output port
- 11 VGA Output port



- 4
- 5
- 6
- 7
- 8
- 9
- 10
- 11

3. System topology diagram:

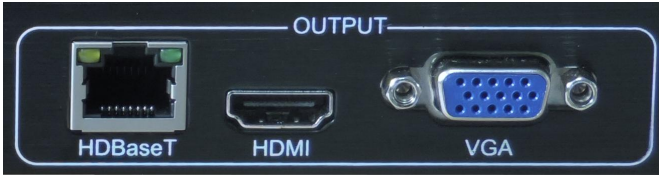


3rd Communications settings

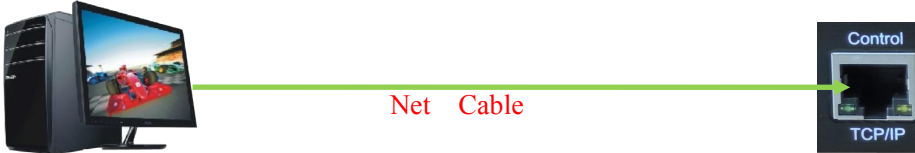
LM-AD01 used TCP/IP Control, through IP Control to achieve video adjustment, switching of signal sources, save and load scene mode, if you need to control the device, you need to first set the control computer and network communications equipment.

3.1. Hardware connections

3.1.1 First through the HDMI line or VGA line connection equipment and projector, the device output for the OUTPUT area, if user buy LM-AD01 with HDBaseT function, also can be connected with the projector through the net cable. Interface as shown below:



3.1.2 Connect the TCP/IP interface of the device to the computer through the cable, as shown below:



3.1.3 Press the power switch, power led is red on, can operate on the equipment.

3.2 Network settings

3.2.1 network segment setting

Device to factory settings initial segment is 3 , So if you need to segment the computer control device must be set to 3 Computer setting procedure is as follows:

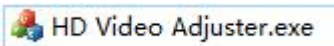
By RJ45 Network cables connecting computers and devices TCP/IP Ports opened by computer Control Panel ----- network and sharing Center ----- change adapter settings ----- double-click Ethernet ----- Property ----- Double-click Internet Protocol version 4(TCP/Ipv4) After following pop-up window:

192 . 168 . 3 . 128
255 . 255 . 255 . 0
192 . 168 . 3 . 1

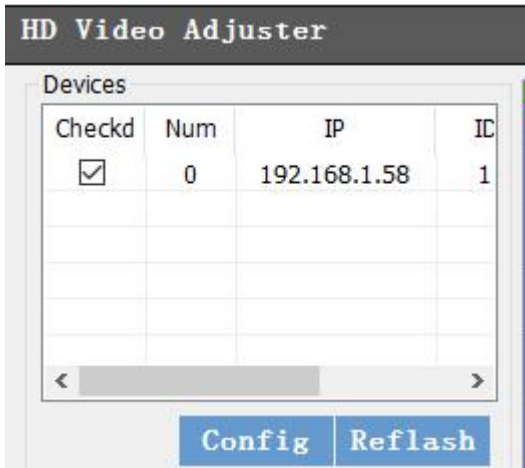
Select use the following IP Address (S) , Segment and the gateway address is set to 3 Hou, if address is local area network computer or device conflicts is not the same and normal communications equipment.

3.2.2 Open the device control software

All are set up correctly, double click to open

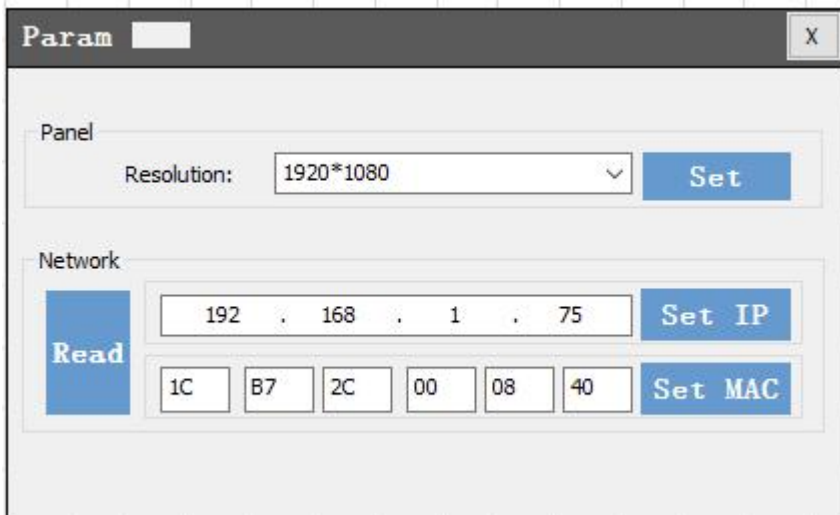


Control software after the software interface, check the left corner of IP addresses (pictured below), you can control the equipment:



3.2.3 local area network control

Devices can be controlled via a local area network, make sure your computer and equipment can be normal under normal traffic conditions open control software, check the IP Click on the parameter configuration , the following pop-up window:



Click on the synchronization, you can view the device IP Addresses. IP address to LAN on the same network segment, and then through the cable routing condition equipment and connections, any computer within the LAN can control equipment.

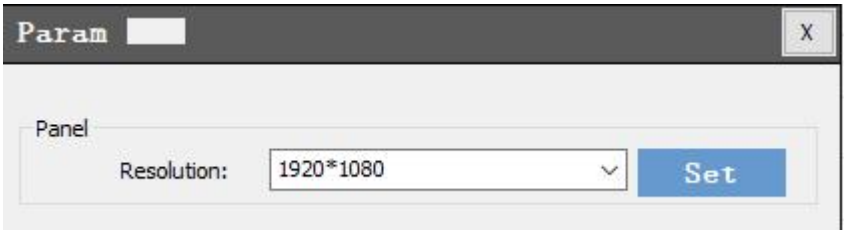
3.2.4 Reset IP Address

Through the device front panel switches Reset Can reset the factory network 3 IP Addresses.

4th Device debugging

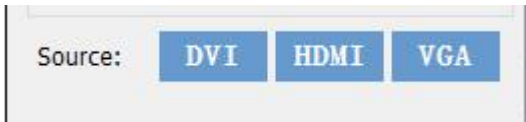
4.1 Resolution selection

Click on configuration control software parameters, select the physical resolution of the projector.



4.2 signal source selection

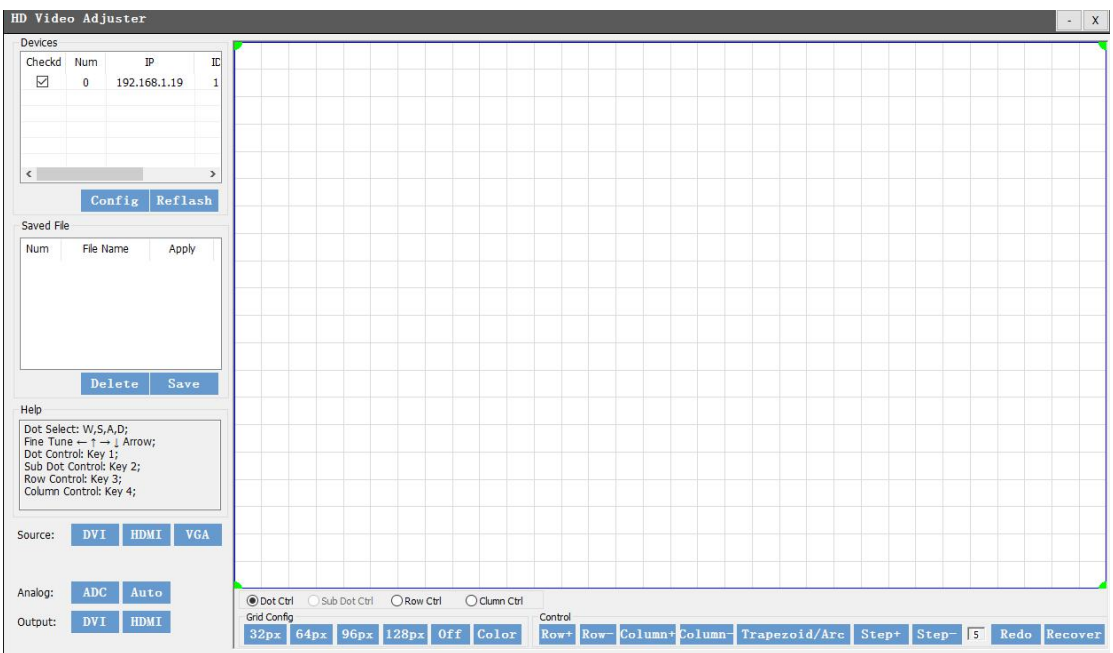
Device support 1 channel VGA, 1 channel HDMI, 1 channel DVI Input signal according to access click on the appropriate signal source , The following icons:



4.3 the trapezoid adjustment

Keystone correction applies to image line adjustment first coarse through the trapezoid adjustment, equal to or slightly greater than the projection screen the effective projection image display area.

Equipment IP After checking, click the control menu the following ladder / Arc adjustment Hou, arc in order to adjust the font, dimmed trapezoid adjustment can be made. Can see the virtual screen in four green point, drag it by the mouse 4 Green picture projector can be trapezoidal, rectangular and other irregularly-shaped correction, as follows:



4.4 arc correction

Suitable for curved overflow image projector.

4.4.1, Click **Trapezoid/Arc**, **Trapezoid/Arc** Text to be black, and then select **Sub Dot Ctrl** Into the arc adjustment;

4.4.2 , Click **Row+** and **Column+** Increase the number of pilot adjustment required, mouse hold down the adjust the position of the point, drag radial correction adjustment.

5th Image trimming

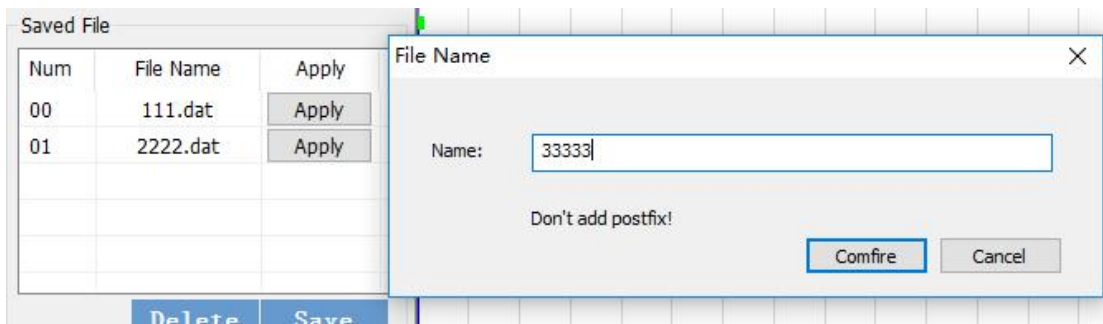
Coarse through the mouse, the images with minor deviations, can be adopted by Key to fine-tuning:

Use the mouse to select the point you need to debug, select step according to the actual situation, according to computer keyboard **←**, **↑**, **→**, **↓** keys to fine tune until the debugging to the best.

After debugging is complete, device debugging parameters are automatically saved to the device, directly out of control software.

6th Save and load patterns

Commissioning has been completed, can save the debug data in the Debugging folder, then select the corresponding data file (saved data in the Debug folder inside the computer software, is not in the device). Save and apply as shown in the following figure:



7th Other considerations

7.1 Debugging device, users can input images signal if signal input can be used without a network debugging, effects and image adjustment;

7.2 Input or output signals VGA, Offset or color cast of the image, click on the control software **ADC** and **Auto** To rectify;

7.3 If the display device DVI Interface, set the **output mode** selection **DVI**, but no sound output, If the display device is HDMI Interface, set the output mode selection HDMI Mode.