



## 8x1 HDMI Multi-viewer 4K@30Hz

Model No.: LM-S81F-4K

---



## User Manual

## Dear Customer

Thank you for purchasing this product. For optimum performance and safety, please read these instructions carefully before connecting, operating or adjusting this product. Please keep this manual for future reference.

## Introduction

LINK-MI LM-S81F-4K HDMI 4K 8x1 Multi-viewer is a high performance with 8 HD screen segmentation and seamless switching output switch. It can display 8 HD digital video signal on the same screen, and has a variety of video segmentation, seamless switching 8 HD input signal synchronously.

The control methods of the switch is flexible, it can be switched via button and IR control. It's a very practical and stable switch and easy to install, can be used in the major projects, meeting halls and other places.

## Features

1. Support 8 HDMI inputs, 1 HDMI output.
2. Support 8 HDMI signal screen segmentation.
3. Support 8 HDMI signal seamless switching.
4. Support multiple control ways by button, IR, RS232.
5. Compatible HDMI 1.4, HDCP 1.4, and DVI 1.0 version.
6. The input resolution support 1080P, 720P, 1080i, 1024x768, 1360x768 etc.
7. The output resolution support 1080P@60Hz, 2560x1600@60Hz, 2560x1440@60Hz, 3840x2160@30Hz.
8. Support audio and video superposition.
9. More clearer subtitles.
10. HDMI input and output transmission distance: high speed HDMI cable can reach 15m.

## Specification

Input Ports	8 HDMI inputs
Output Ports	1 HDMI output
Control Ports	RS232
Input Resolution	Support 1080P,720P,1080i,1024x768,1360x768 etc.
Output Resolution	Support 1080P@60Hz, 2560x1600@60Hz, 2560x1440@60Hz, 3840x2160@30Hz.
Display Modes	Support 9 kinds of display modes
Power Supply	DC 12V/1A
Net Weight	792g
Dimension (LxWxH)	252x105x25 (mm)

Note: Specifications are subject to change without notice. Mass and dimensions are approximate.

## Interfaces

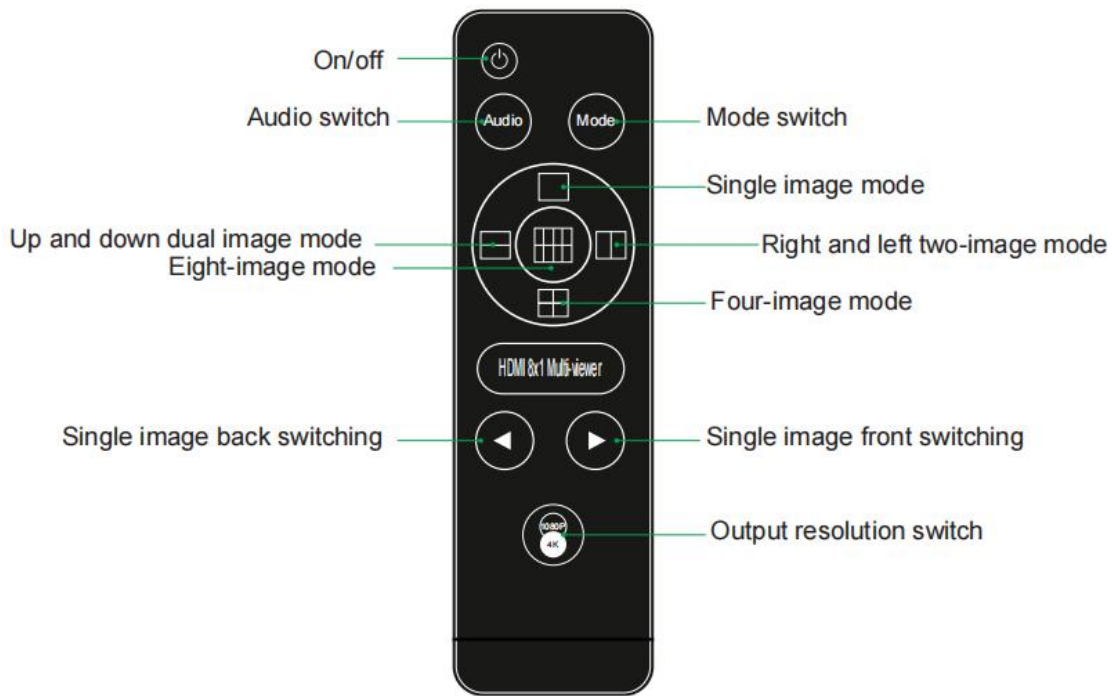


- ① Power: Power LED indicator
- ② DC/12V: DC/12V power interface
- ③ IR: IR receive
- ④ RS232: RS232 Control
- ⑤ AUDIO: Audio mode switching
- ⑥ VIDEO: Video mode switching

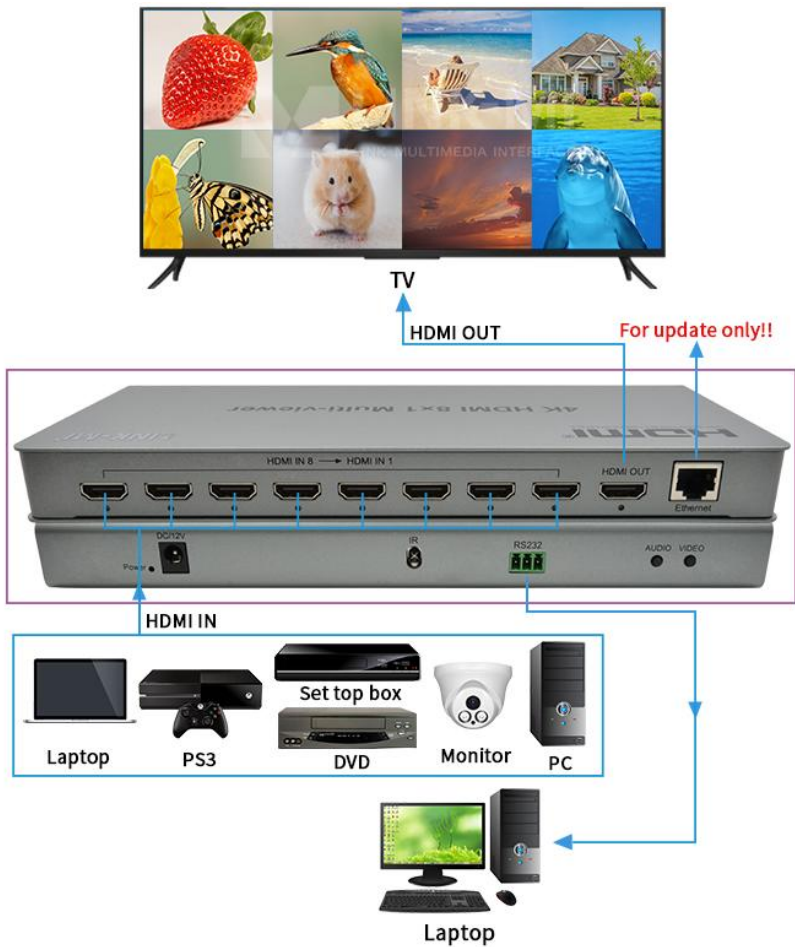


- ⑦ HDMI IN8 →HDMI IN1: Input interface
- ⑧ HDMI OUT: Output interface
- ⑨ Ethernet (for update only!!)

# IR Remote

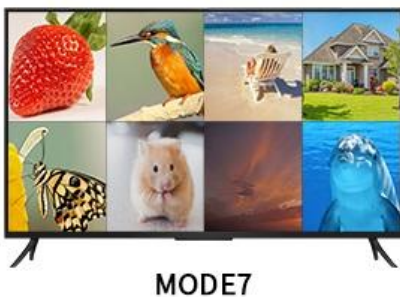
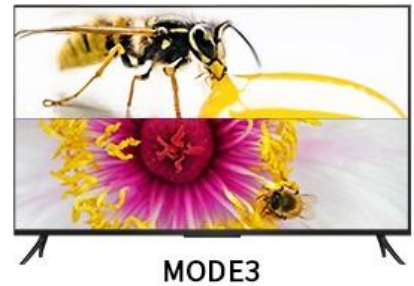
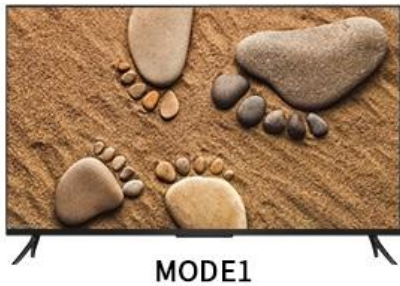


# Connection



# Display Modes

There are 9 display modes for switching.



**MODE1:** Single image display mode (Channel 1-8 seamless switch)

**MODE2&MODE3:** Dual image display mode

**MODE4:** Quad display mode

**MODE5 & MODE6:** 1 big -7 small display mode

**MODE7 & MODE8 & MODE9:** 8 Image display mode

**More clearer subtitles**





connect to wireless  
family group and sharing  
files located on other network  
answer  
Fix network problem

## Application



Game



Security monitoring



Pub

## Package Contents

- 1) 1x Main Unit (4K HDMI 8x1 Multi-viewer)
- 2) 1x Power Adapter (12V/1A)
- 3) 1x Remote Control
- 4) 1x User Manual



Shenzhen LINK-MI Technology Co., Ltd.

---

[www.link-mi.com](http://www.link-mi.com) E-mail: sales@link-mi.com